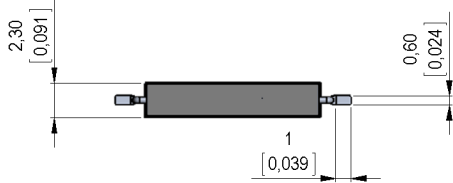
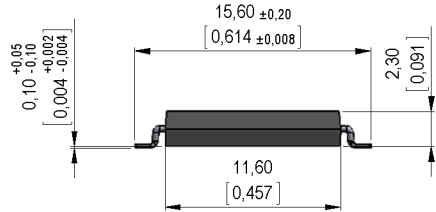


**Dimensions mm[inch]**  
tolerances according to DIN ISO 2768-m  
Toleranzen gem. DIN ISO 2768-m



**Isometric**  
Scale 2:1  
Maßstab 2:1

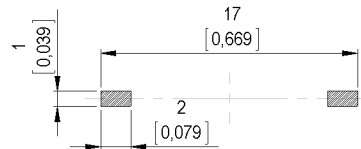


**Marking**

according to EN60062/factory code  
gem. EN60062/Fertigungsstätte

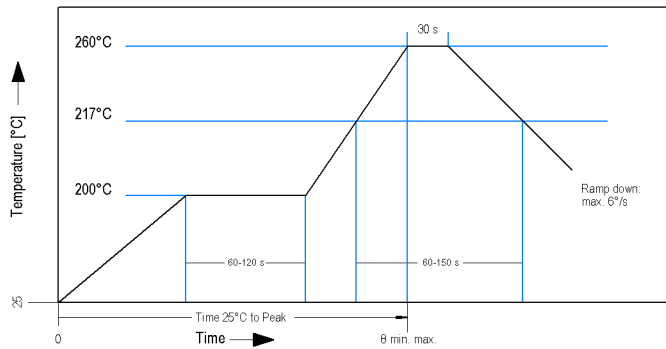


**Recommended PCB Pad Layout**

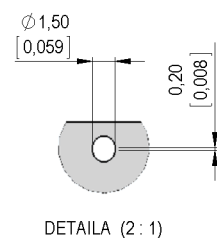
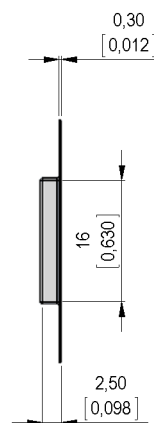
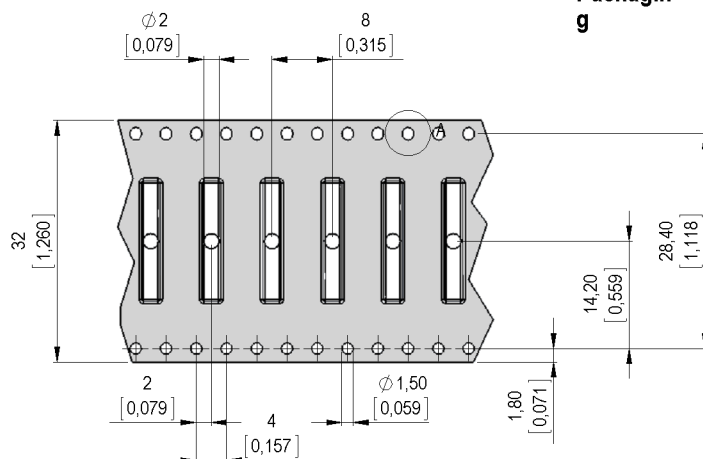


**Solder Reflow Profile**

reflow soldering conditions according to JEDEC norm J-STD 020D.1



**Packaging**





Europe: +49 / 7731 8399 0 | Email: info@standexmeder.com  
 USA: +1 / 508 295 0771 | Email: salesusa@standexmeder.com  
 Asia: +852 / 2955 1682 | Email: salesasia@standexmeder.com

Item No.:  
**9161870025**  
 Item:  
**MK16-E-2**

| Magnetic properties                   | Conditions                                  | Min | Typ    | Max | Unit |
|---------------------------------------|---|-----|--------|-----|------|
| Pull-In                               | at 20°C                                     | 45  |        | 72  | AT   |
| Test equipment                        |   |     | KMS-11 |     |      |
| Pull-In in milliTesla (modified conta | MS150 -<br>phys. caused tolerance +/- 0,1mT | 2,3 |        | 3,5 | mT   |
| Test equipment                        |   |     | MS-150 |     |      |

| Contact data 87           | Conditions   | Min | Typ     | Max | Unit |
|---------------------------|--|-----|---------|-----|------|
| Contact-material          | Plating thicknesses are proprietary                                  |     | Rhodium |     |      |
| Contact rating            | Any DC combination of V & A<br>not to exceed their individual max.'s |     |         | 10  | W    |
| Switching voltage         | DC or Peak AC  |     |         | 200 | V    |
| Carry current             | DC or Peak AC  |     |         | 0,5 | A    |
| Switching current         | DC or Peak AC  |     |         | 0,4 | A    |
| Contact resistance static | Measured with 40% overdrive<br>Start Value                           |     |         | 150 | mOhm |
| Breakdown voltage         | according to IEC 255-5   | 230 |         |     | VDC  |

| Special Product Data | Conditions | Min | Typ                 | Max | Unit |
|----------------------|------------|-----|---------------------|-----|------|
| Housing material     |            |     | epoxy resin         |     |      |
| Approval             |            |     | UL-File Nr. E156887 |     |      |

| Environmental data          | Conditions                        | Min | Typ          | Max | Unit |
|-----------------------------|-----------------------------------|-----|--------------|-----|------|
| Shock                       | 1/2 sine wave duration 11ms       |     |              | 30  | g    |
| Vibration                   | from 10 - 2000 Hz                 |     |              | 20  | g    |
| Ambient temperature         |                                   | -40 |              | 130 | °C   |
| Storage temperature         |                                   | -50 |              | 130 | °C   |
| Soldering Temperature Tsold | Reflow acc.IPC/JEDEC J-STD-020D.1 |     |              | 260 | °C   |
| Cleaning                    |                                   |     | fully sealed |     |      |

Modifications in the sense of technical progress are reserved

Designed at: 30.10.08 Designed by: JHEYDER  
 Last Change at: 28.01.15 Last Change by: WKOVACS

Approval at: 11.11.08 Approval by: JHEYDER  
 Approval at: 28.01.15 Approval by: AWEBER

Version: 11