

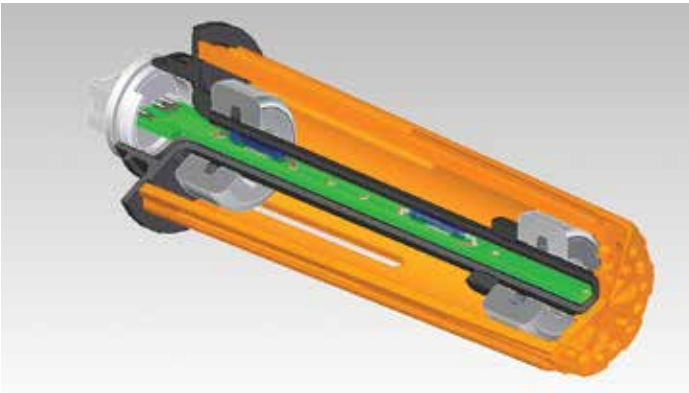


Application Alley

Flood Prevention Switch - R12580, R12581 Level Sensors

"Dynamic Appliances"

Our customer was developing a new generation dishwasher that required updated technology to function effectively. This appliance demanded a flood prevention switch design that supported their goal to eliminate leak points in conjunction with providing increased energy efficiency.



In order to achieve these goals, this dishwashing machine needed feedback from the sump drain about water flow and temperature in order to recycle and re-heat the water. The Standex Electronics team strategically partnered with the customer for more than two years to develop the product, lead testing and measurement, verify data, and produce a reliable high-performing part that allowed for such expectations to be met.



The result was a multi-functional flood and flow rate switch that combined the functions of flow and temperature sensing for flood prevention

conditions. We delivered a cutting-edge design to a new line of appliances to fuel growth, productivity, and functionality for our customer and end-user. A unique custom molded package that allowed for ease of assembly in our customer's lean manufacturing cells was also achieved.

Features:

- Easy to install and service
- Plug-N-Play
- Simple switch access
- Automatic switch reset
- One spliced connection

Applications:

- Flow, pressure, and level sensing
- Flood prevention conditions
- Commercial or residential usage

Executive Standex Electronics Customer

“ Our company needed a high quality flood and flow rate switch for our new generation dishwasher line. The specifications and requirements were very stringent. The Standex-Meder team took genuine interest in our project, solved various problems through innovative ideas and design, led the testing and measurement, and delivered a custom solution that exceeded our expectations. ”

Give Standex Electronics a hello@standexelectronics.com to discover how we can solve problems and deliver for you!

About Standex Electronics

Standex Electronics is a worldwide market leader in the design, engineering, and manufacture of standard and custom electro-magnetic components, including magnetics products and reed switch-based solutions.

Our magnetics offerings include planar, current sense, and conventional low- and high-frequency transformers and inductors. Reed switch-based solutions include Meder, Kent, and KOFU brand reed switches, as well as a complete portfolio of reed relays, and a comprehensive array of fluid level, proximity, motion, water flow, HVAC condensate, hydraulic pressure differential, capacitive, conductive and inductive sensors.

We offer engineered product solutions for a broad range of product applications in the transportation, automotive, medical, test and measurement, military and aerospace, aviation, HVAC, appliance, security and safety, and general power and industrial markets.

Standex Electronics has a commitment to absolute customer satisfaction through a partner, solve, and deliver approach. With a global organization that offers sales support, engineering capabilities, and technical resources worldwide – we implement customer driven innovation that puts the customer first.

For more information on Standex Electronics, visit us on the web at standexelectronics.com.

Contact Information:

Standex Electronics

World Headquarters
4538 Camberwell Road
Cincinnati, OH 45209 USA

Standex Americas (OH)

+1.866.STANDEX (+1.866.782.6339)
info@standexelectronics.com

Standex Electronics Asia (Shanghai)

+86.21.37606000
salesasia@standexelectronics.com

Standex Electronics Europe (Germany)

+49.7731.8399.0
info@standexelectronics.com

Standex Electronics India (Chennai)

+91.98867.57533
kkasaragod@standexelectronics.com

Standex Electronics Japan (Kofu)

+81.42.698.0026
sej-sales@standex.co.jp

